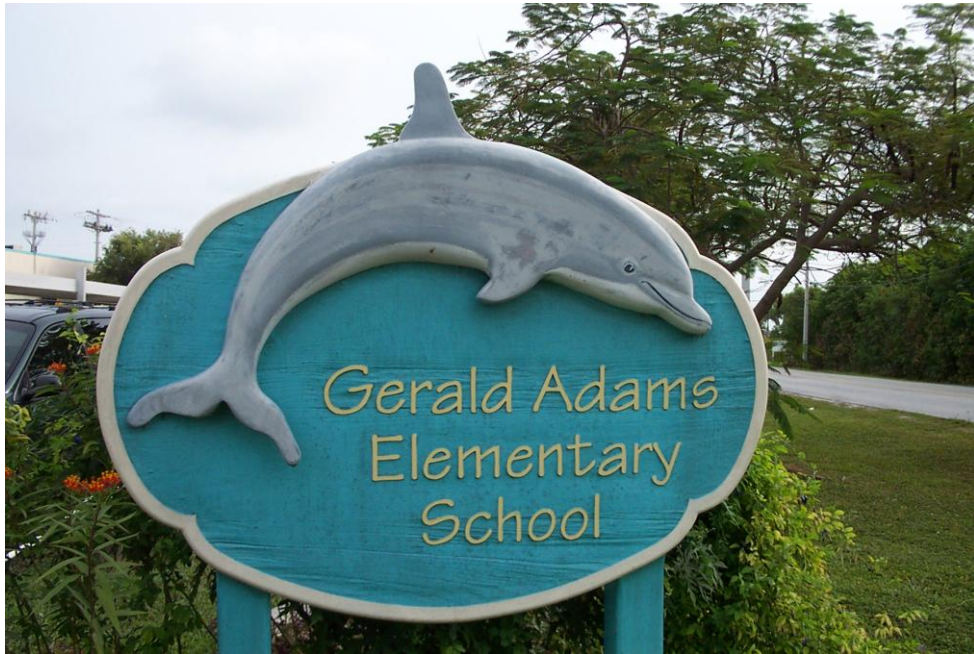


Gerald Adams Elementary School



2013-2014 Technology Plan

Gerald Adams Elementary School Technology Committee Team

Dr. Frannie Herrin, Principal

IT Representative	Erskine Robinson	Lab Manager	Tyresa Butler
K-1 Representative	Jackie Davila	Special Areas	Ashley Henriquez
2-3 Representative	Meghan Taylor	Media Specialist	Jamie Crespo
4-5 Representative	Yvette Toledo	ESE	Christine Shanle

General Introduction/Background

Gerald Adams Elementary School has been leader in providing technology-aided education in the Monroe County School District.

Our school currently utilizes more than 350 computers divided into classrooms and two computer labs. Each classroom has a standardized technology setup, which includes hardware and software appropriate to each grade level.

Our local area network (LAN) is one of thirteen at schools around the district. Each school is connected through a fiber optic network, which has recently been upgraded to a gigabit (Fiber Optic) system, to form a district level wide area network (WAN).

Every computer in the school is connected to the Internet. The district administration building provides Internet web service, Pinnacle Grade book, Share Point, SnapShot and access to the Total Education Resource Management System (TERMS).

Current Status

Classroom:

Gerald Adams currently has the following standard hardware configuration for each classroom:

- ❖ 1 Teacher Computer-HP Probook, Docking Station
 - Includes DVD-R
- ❖ 4 or more Student Computers/Laptops with Windows 7 Enterprise
- ❖ 1 Scanner used for document or photo scanning (CanoScan)
- ❖ 1 Digital Camera for class activities and projects
 - 1 Compact Flash or Secure Digital (SD) memory card for use with the camera
 - 1 Compact Flash or Secure Digital (SD) memory card **reader** for easy picture access
- ❖ Access networked color printer by the teacher (or students on a case-by-case basis)
- ❖ Access networked black and white printer by teachers (or students on a case-by-case basis)
- ❖ 1 Smart Technologies Interactive White Board in 38 classrooms
- ❖ 1 DVD/VCR Combo with TV Tuner (in most classrooms)
- ❖ 1 Audio Enhancement amplification (in selected classrooms) with Microphones
- ❖ 1 Overhead projector (Epson 410w) with the Interactive White Board in 38 classrooms
- ❖ 2 Interactive Projectors (Epson 455wi)
- ❖ 1 SMART Response Setup with 1 receiver and 20 clickers (in selected classrooms)

We currently have for the school:

- ❖ 11 classrooms configured with audio enhancement set-up
- ❖ 38 Smart Technology Interactive White Boards with Epson 410w Projectors
- ❖ 02 Epson Interactive Projectors
- ❖ Cafeteria set up with a projector and large screen
- ❖ 171 Wireless Mobile Laptops for Students (24 in the iLab)
- ❖ 132 Wired Desktops for Student (30 in the CCC LAB)
- ❖ Wireless Aerohive Access Points throughout school
- ❖ 10 iPod touch devices for ESE
- ❖ 01 iPad 2 for Administration

Software:

Each computer in Gerald Adams School has a multitude of district-approved programs, which are remotely installed for student and/or staff use.

All computers in the school have the following programs installed:

- ❖ Office Applications:
 - Microsoft Office 2007 or Office 2010 on All Student and Select Teacher
 - Excel, Outlook, PowerPoint, Publisher, Word, Access, and InfoPath
 - Adobe Reader XI
 - Excelsior's Pinnacle Grade book
 - Follett's Destiny Media Manager (Library system and Textbook inventory)
- ❖ Educational Applications:
 - Renaissance Place
 - Accelerated Reader, Accelerated Math
 - English in a Flash
 - Fluent Reader
 - STAR Early Literacy, STAR Math, STAR Reading
 - Destination Success (previously RiverDeep)
 - FCAT Explorer
 - Harcourt Math Center
 - Scholastic
 - Scholastic Reading Inventory (SRI)
 - Reading Counts
 - ENCARTA
 - Ellis*
 - Rosetta Stone*
 - Type to Learn (District has 100 licenses of TypingAce, which is web-based, which will replace)
 - Kidspiration and Inspiration
 - Tune Into Reading
 - FastMath grades 1-5
 - FastForward (Struggling Readers Level 1)
 - Apple iTunes on Select devices
 - Learning Alley on Select devices
 - Lexia Core 5 local install on all 290 student devices
- ❖ Background Applications:
 - Adobe Flash
 - Adobe Shockwave
 - Microsoft Silverlight
 - Adobe Acrobat Reader XI
 - McAfee Virus Scan
 - WinZip
 - Windows Movie Maker
 - Google Chrome Browser
 - Internet Explorer 9 Browser

Additionally, classroom teachers have a multitude of educational software programs, which are run on the classroom computers and used by students. They run those programs in the classrooms on their computers for the students. We do not support entertainment software.

*In ESOL classrooms

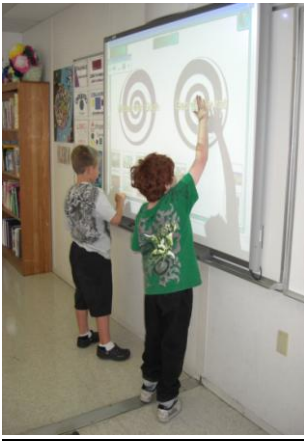
Computer Labs:

Gerald Adams currently has two computer labs, with 30 computers in one lab and 24 laptops in another.

CAI lab – The CAI lab supports the school’s academic software programs. The software choices include any program that is distributed through the network, including any web-based software. Both labs are used during our after school Century 21 Program.

Internet Lab – Also called the I-lab, is located in the school’s media center. For part of the day, the I-lab is used by classes doing CAI lesson work. The rest of the day the lab is available for any teacher to sign up their class and bring them in either for research or for extra work on any of the school’s other networked education programs. Entire classes can use this lab to do word processing, Internet research, or use any other specified program. The majority of the STAR diagnostic testing is also done in the Internet Lab. The Internet Lab is also used for teacher and staff training after school. The Lab is equipped with an overhead computer projector allowing a trainer to show students or teachers what to do on a large screen in the lab. This lab currently has 24 laptops and 6 desktops, desktops are used exclusively for Fast Forward.

Interactive Whiteboards:



Gerald Adams currently has 38 Smart Technologies Interactive Whiteboards (Smartboards), along with 38 Epson Projectors. The projectors are mounted in the classrooms. Smart Board enables both students and teachers to capture you can capture all your notes, screenshots, images and videos to a single “notebook” file that can be reopened and resume at a later date. Applications required to run the Interactive Whiteboards are Smart Technologies Notebook Software. Some classroom has Smart Response Units installed with remote controls (called clickers). SMART Response PE provides everything you need to easily prepare quizzes, tests and exams or spontaneously add questions to lessons. The system combines the assessment power of SMART Response software with the lesson-creation tools and features of SMART Notebook software.



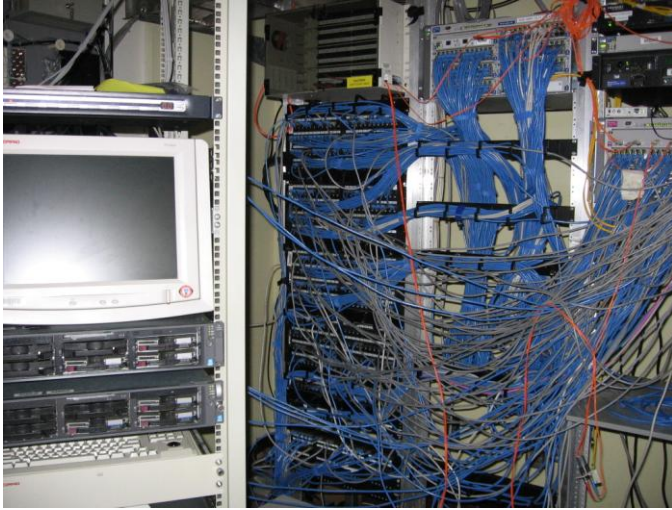
Printers:

Gerald Adams currently has only networked printers set up around of the school. It is possible to print to any of

these printers from any of the computers in the school. The school currently has color networked printers and black and white printers. All of these printers are high-quality and high yield laser printers. The majority of the printers are also setup to printer duplex (front and back of paper) automatically.

Gerald Adams has also leased 2 Xerox Copiers with scan-to-email function.s

Servers:



Gerald Adams currently has four servers in use.

- GAE-DC2: This server handles all the background services for the school's network. This includes the remote installation of applications and their support.
- GAE-APP: This virtual server houses mostly administrative data. The school's financial data, grade book files, databases. It also holds staff documents. The GAE-CLASS server was retired, and the GAE-APP server now holds all the locally hosted student diagnostic data. This server stores all

the locally hosted student diagnostic data. It also provides a location for teachers to distribute files to students and for students turn in documents to teachers.

- GAE-MDT: the District set up this server. This is actually a Windows Deployment Services Server (WDS Server) that deploys Windows 7. Window 7 Deployment Server allows the quickest method of repairing any software issue, reinstalling Windows.

All the servers have nightly, scheduled backups setup and maintained by the district. There are incremental (only things that are added or changed) backups every night along with full (everything) backups every weekend. Backed up files are easy for the tech to access for two weeks before they are archived.

Video Production:

Gerald Adams has control over channel five within the school. Each classroom, and many offices, has a television that is hooked into the school's cable system.



Channel 5, Dolphin TV, broadcasts the school's morning show. Each school day a crew of a dozen students with the assistance of two adults produces a morning news show. The show has segments on news, lunch, the weather, a daily fact, birthday announcements, leads the school in the Pledge of Allegiance, and hosts other special announcements.

Initiatives and Objectives:

Goal 1: Professional Development

“All teachers and staff will demonstrate the fundamental concepts and skills for applying information technology in the education setting as identified by the National Council for the Accreditation of Teacher Education (NCATE)”

GAE technology department will implement the following steps to attain this goal.

1. Team Technical Assistance:

In able to provide faster technical assistance to teachers and administrators, Gerald Adams School has divided various areas of technology assistance among different people in the school. A team approach to technical problems will be utilized to create faster response to questions and reduce bottlenecks at the help desk. Our technical assistance program has created a network of users that are able to assist other users in problem solving related to technology.

1. Hardware and General Software problems – All computer and server hardware failures are fixed on site by the school technician, Erskine Robinson (Robbie). The school technology technician also maintains all software installation and maintenance. All hardware and general software problems must go through the help request system for repair. GAE upgrade all its desktop computer to at least 2 GB Memory and has replaced all the laptop keyboards this school year.
2. Printer Support – Each of the networked printers in school must have toner, fuser and drum replacements on a regular basis. Erskine Robinson (Robbie) will replace as requested through the help request system. Teachers have been made aware of the need to conserve printing by teachers and students, as toner is extremely expensive for the school.
3. Pinnacle Grade – Assistance with the school’s grading and Carol Schmidlin, CRT who maintains, trains and troubleshoots the program’s quirks regularly, provides attendance program, Pinnacle.
4. Renaissance Place – All computers have access to these programs because it is a web hosted application. The data is maintained by our academic support team consisting of: Reading Coaches, CRT, and Media Specialist.
 - a. Accelerated Reader – This program provides educators timely, accurate information on student academic performance. You can use this information to quickly adjust instruction to help all of your students reach their greatest potential. Now Accelerated Reader helps teachers reach all types of readers with Reading Practice, Vocabulary Practice, Literacy Skills, and Other Reading Quizzes. Recorded Voice Quizzes are also available for emergent readers. AR quizzes cover all levels of reading ability in both English and Spanish.
 - b. Accelerated Math – Accelerated Math, Renaissance Place (RP) Edition is a task-level learning information system (LIS) that ensures success in math for all your students, regardless of their ability. LIS products give educators timely, accurate information on student academic performance. You can use this information to quickly adjust instruction to help all your students reach their greatest potential. The 3rd, 4th, and 5th grade classes use this program. Each class also has a Scantron scanner for quick and easy scoring of the assignments.
 - c. English in a Flash – This program introduces a research-based approach to help you accelerate the language acquisition of your English language learners (ELLs). Using English in a Flash, students acquire the building blocks of language—the sound system, vocabulary, and grammatical structures of English. With English in a Flash, teachers can provide individualized

instruction and the repetition and practice necessary to develop students' listening comprehension and speaking skills.

- d. Fluent Reader - Fluent Reader's modeled and repeated oral reading software makes it easy for you to offer new and struggling readers one of the very best reading-improvement strategies: guided repeated oral reading, which is commonly known as "repeated reading." Students using Fluent Reader dramatically boost their fluency—and their success overall as readers. Fluent Reader will help any of your students who read in a slow, halting, and word-by-word manner.
 - e. STAR Early Literacy – STAR Early Literacy is a computer-adaptive, criterion-referenced diagnostic assessment. With STAR Early Literacy software, you can measure the emerging reading skills of students in grades Pre-K through 3. However, STAR Early Literacy may be administered to students in grades 4 and beyond as well. STAR Early Literacy's computer-adaptive testing offers you easy-to-use tools that help you match your instruction to individual student needs.
 - f. STAR Math – STAR Math is a computer-adaptive, norm-reference mathematics assessment program and database. With STAR Math, you can assess the math levels of students in grades 3-12 in about 15 minutes. In STAR Math, your students work through a short assisted-response (multiple-choice) test. If a student misses a question, the difficulty level is reduced. If the student's response is correct, the difficulty is increased. This system minimizes frustration and provides more accurate scores for both high- and low-performing students.
 - g. STAR Reading – STAR Reading is a computer-adaptive, norm-referenced reading test and database. With STAR Reading software, you can access the reading levels of students in grades 1-12 in about 10 minutes. STAR Reading's computer-adaptive testing offers you easy-to-use tools that help you match your instruction to individual student levels. In STAR Reading, the student works through a short, assisted-response (multiple-choice) test. If a student misses a question, the difficulty level is reduced. If a student's response is correct, the difficulty is increased. This system minimizes frustration and provides more accurate scores for both high-performing and low-performing students.
5. Destination – Previously RiverDeep, this software is currently used by all grade levels in the areas of science, math and reading. Ron Batalier, the lab manager, maintains the database for this program.
 6. FCAT Explorer-web based (available for Students in grades 3-5)
 7. Teacher programs for data analysis and Human Resources
 - a. Snapshot
 - b. Edusoft
 - c. PMRN
 - d. HR Portal

2. Training Needs Assessment Survey:

In an effort to provide training in specific areas addressing particular teacher's needs, the school this year will construct and distribute a teacher training needs assessment survey. As various teachers at the school are at different levels of technological competence, the survey will try to identify what teachers need, what training, and what training teachers most want. Using the results of the survey, specialized training sessions will be created for small groups of teachers who want to learn about specific sections of the technology curriculum. The classes will cover Web Page building, email, all the programs in the Microsoft Office suite, Microsoft Encarta, Internet Explorer, scanners, cameras and any other topics that teachers request.

Goal 2: School Improvement:

The Gerald Adams Technology Committee proposes the following expenditures in order to support the school improvement plan and technology usage throughout the school.

1) Printer Upgrades:

The technology committee this year has upgraded most of networked printers throughout the school both to reduce paper usage and overall printer costs. Two Xerox Copiers has been delivered to assist in printing costs

2) Student Computers:

Currently have 171 mobile computer but purchasing batteries and keyboards for use through-out the school and all mobile computers are using the Aerohive Wireless Access Points strategically located throughout the school. We were also able to deploy 132 wired desktops throughout the school and upgrade each one from 512 MB to 2048 MB of Memory to improve performance.

3) Battery Backups:

In order to prevent data loss and hardware damage, all of the servers, routers and switches are on Uninterruptible Power Supply units. We also have essential administrative computers on UPS units.

4) Parts:

Gerald Adams were able to secure memory, laptop keyboards, and batteries to upgrade ALL the devices at Gerald Adams.

5) Printing Supplies:

Printing supplies continue to be a major, and costly need, but one that is imperative for the educational quality in all disciplines.

Conclusion:

Gerald Adams School continues to strive to use technology to better the educational opportunities in the classroom. We feel that our use of technology both enhances and augments the curriculum as set forth by the Monroe County School District. We feel that our staff development and technology plan will continue to support growth in the coming year.